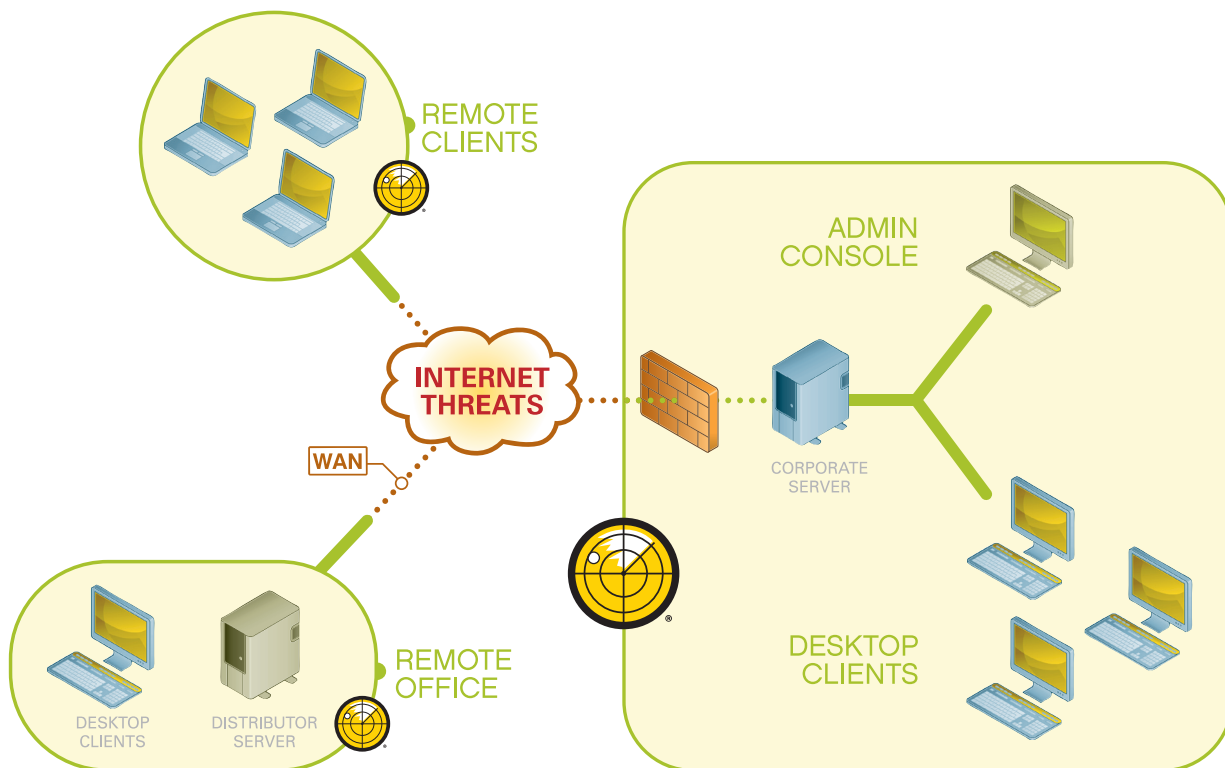


**Webroot® AntiSpyware Corporate Edition with AntiVirus** is a comprehensive malware solution that protects and secures network clients. This powerful solution provides scalable, centrally managed, desktop-level virus and spyware protection. Webroot AntiSpyware Corporate Edition with AntiVirus offers the industry's most effective spyware blocking, detection and removal capabilities as well as the industry's fastest virus response time powered by Sophos.



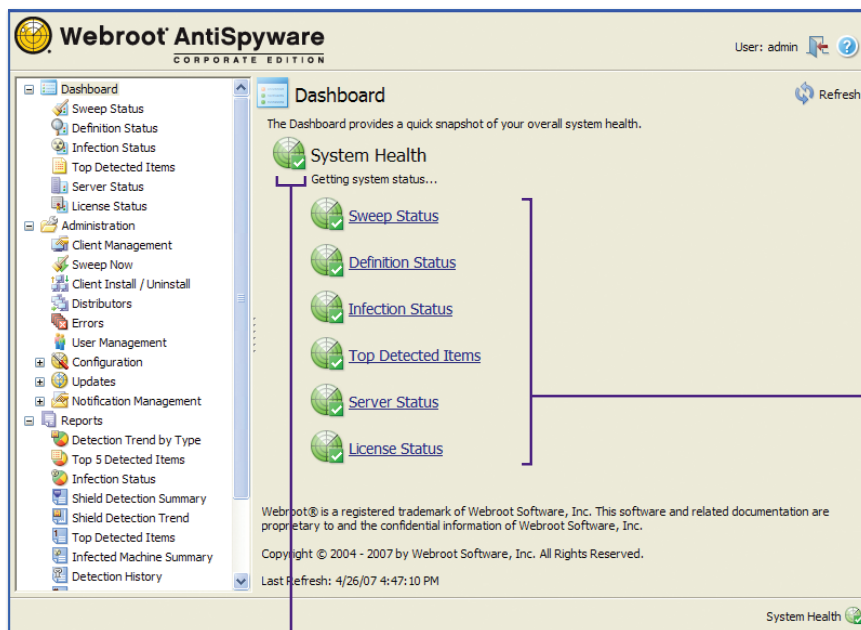
- **Scalable:** Designed for any size network, Webroot AntiSpyware Corporate Edition with AntiVirus can expand to meet your growing business needs.
- **Centrally Managed:** Monitor network clients for spyware, most recent scans and blocked threats.
- **Effective** Independent testing consistently shows Webroot AntiSpyware Corporate Edition with AntiVirus to be at least 40% more effective in blocking and removing spyware. The robust virus protection, provided by Sophos, has been recognized 38 times by VB100 as one of the best for effectiveness. Together, you have the most effective protection available today!

#### Why Manage Risk When You Can Secure Peace of Mind?

Webroot AntiSpyware Corporate Edition with AntiVirus is fast and easy to deploy, allowing organizations of any size to focus more time on their business rather than security threats. Optionally distributed servers allow large enterprises to scale and balance client updates while conserving bandwidth between multiple locations. Small and medium businesses will appreciate the simple installation, deployment, and configuration functionality. Webroot AntiSpyware Corporate Edition with AntiVirus is powered by award-winning Spy Sweeper® technology and is Windows Vista™ compatible.

FEATURE	PROTECTION	BENEFITS
<p><b>Real-time Threat Protection with Smart Shields</b></p>	<p>Powerful Smart Shields provide real-time protection and proactively block Trojans, keyloggers, rootkits and other malicious malware threats before they can infect the desktop. Shields are configurable to allow approved programs and features.</p>	<ul style="list-style-type: none"> <li>• Block spyware and viruses from ever installing – on-read, on-write or on-execute functionality</li> <li>• Detect and terminate existing malware processes</li> <li>• Prevent malware from modifying security settings</li> <li>• Stop installation of unwanted toolbars or unwelcome ActiveX® components</li> <li>• Continuous protection from spyware and viruses</li> </ul>
<p><b>Web-based Client Management, Administration &amp; Configuration</b></p>	<p>Centrally managed web-based console makes global administration easy. Customizable sweep settings offer the flexibility of automatic or on-demand sweeps. Active directory integration allows administrators to locate and install users quickly and easily.</p>	<ul style="list-style-type: none"> <li>• Automatic or customizable sweep options allow certain file types to be excluded</li> <li>• Manage multiple clients quickly and easily</li> <li>• <b>NEW!</b> Active directory integration simplifies local and remote client installations and deployments; supports nested groups</li> <li>• Maintain policy enforcement for remote and laptop users</li> </ul>
<p><b>Robust Reporting</b></p>	<p>Centralized reporting of detected malware on each client shows all infections detected, the action taken (quarantined or removed) and the number of traces found for each item. New reports also provide summary and trend information on the malware that attempted to infect your network but was blocked by Smart Shields. These robust reports help show the power and effectiveness of Webroot AntiSpyware Corporate Edition.</p>	<ul style="list-style-type: none"> <li>• <b>NEW!</b> Shield Detection Trend Report shows the malware blocked and allowed within a time range</li> <li>• <b>NEW!</b> Shield Detection Summary Report shows number of threats blocked by type</li> <li>• <b>NEW!</b> Detection Report shows summary of quarantined items by workstation</li> <li>• <b>NEW!</b> Single Detected Item Report shows where a specific type of threat has been quarantined across workstations</li> </ul>
<p><b>Zero Day Protection with Behavioral Genotype® Technology</b></p>	<p>Sophos technology offers built-in protection against both known and unknown threats. This powerful antivirus functionality offers Zero Day Protection using Behavioral Genotype Protection, which defends against new malware mutations born from a specific malware family.</p>	<ul style="list-style-type: none"> <li>• <b>NEW!</b> Guards against unknown malware threats by analyzing behavior before code executes, without creating a false positives and without deploying separate software.</li> <li>• <b>NEW!</b> Provides benefits of a Host Intrusion Prevention System (HIPS) protecting your workstation from exploitation.</li> </ul>

Management Console Dashboard



CLICK **REFRESH** to update all dashboard information based on the latest poll from each client (otherwise, information refreshes hourly.)

CLICK A **LINK** to view more details

SHOWS **OVERALL STATUS**. If any single category has a warning or critical status, this icon reflects the most serious status.

### Infected Machine Summary Report

**SELECT A GROUP OR INDIVIDUAL CLIENTS** (points to the client list)

**SELECT THE DATE RANGE** (points to the date range dropdowns)

**GENERATE A REPORT** (points to the Generate button)

**SELECT TYPE** (points to the Type dropdown menu)

**CLIENT INFECTION DETAILS** (points to the main data table)

**SAVE TO A FILE** (points to the PDF icon)

Name	Group	Last Heartbeat	Version	Spyware Defs	AV Engine
WS265	StressToolGroup	4/30/07 2:41:21 AM	3.1.0.1795	0.0.0.701	
WS261	StressToolGroup	4/30/07 2:35:48 AM	3.1.0.1795	0.0.0.701	
WS257	StressToolGroup	4/30/07 2:38:37 AM	3.1.0.1795	0.0.0.701	

Workstation	Total	Adware	SysMon	Trojan	Info	Virus	First Detect	Last
WS53	6980	3054	1472	2072	382	0	04/27/2007	04/30
WS281	6939	3204	1008	2430	297	0	04/27/2007	04/30
WS69	6916	2660	1596	2394	266	0	04/27/2007	04/30
WS33	6832	3172	1272	2336	52	0	04/27/2007	04/30
WS261	6787	2516	1373	2593	305	0	04/27/2007	04/30
WS269	6388	3451	1083	1854	0	0	04/27/2007	04/30
WS125	6279	2571	1292	2093	323	0	04/27/2007	04/30
WS169	5906	3006	508	2392	0	0	04/27/2007	04/30

### Shield Detection Summary Report

**SELECT A GROUP OR INDIVIDUAL CLIENTS** (points to the client list)

**SELECT THE DATE RANGE** (points to the date range dropdowns)

**GENERATE A REPORT** (points to the Generate button)

**NUMBER OF THREATS BLOCKED BY TYPE** (points to the bar chart)

**SAVE TO A FILE** (points to the PDF icon)

Name	Group	Last Heartbeat	Version	Spyware Defs	AV Engine
WS97	StressToolGroup	4/30/07 2:39:11 AM	3.1.0.1795	0.0.0.701	
WS93	StressToolGroup	4/27/07 4:15:24 PM	3.1.0.1795	0.0.0.701	
WS93	StressToolGroup	4/30/07 2:41:36 AM	3.1.0.1795	0.0.0.701	

From: 04/01/2007  
Through: 05/01/2007

Threat Blocked (Incidents)

Threat Type	Number of Threats Blocked
Internet Connections	~5800
File Systems	~4600
Memory	~4400
Startup	~3800
ActiveX	~3000
IE Hijack	~2800
Windows Message	~1800
IE Trusted Sites	~1700
File System	~1500

## CORPORATE SERVER

### OPERATING SYSTEM:

- Windows® 2000 Pro or Server with SP4
- Windows® XP Pro with SP2
- Windows® Vista Business or Ultimate
- Windows® 2003 Standard, Enterprise, R2, Small Business Server with SP1, or Small Business Server R2 with SP1
- VMWare® Workstation 5.5 or higher

**CPU:** 1 GHz minimum

**MEMORY:** 1 GB minimum

**DISK SPACE:** 1 GB minimum

### DATABASE SUPPORT:

- Microsoft® SQL Server 2005 Express Edition (English language; free download)
- Microsoft SQL Server 2000 or 2005 (for Windows Vista: SQL Server 2005 SP2 is required)

### BROWSER:

- Internet Explorer® 6.0 SP1 or later
- Firefox® 2.0.0.1

## DISTRIBUTOR SERVER\*

### OPERATING SYSTEM:

- Windows 2000 Pro or Server with SP 4
- Windows XP Pro with SP 2
- Windows Vista Business, or Ultimate
- Windows 2003 Standard, Enterprise, R2, Small Business Server with SP1, or Small Business Server R2 with SP1

**CPU:** 1 GHz minimum

**MEMORY:** 1 GB minimum

**DISK SPACE:** 1 GB minimum

\* For networks with over 500 workstations or multiple geographic sites

## CLIENT REQUIREMENTS

### OPERATING SYSTEM:

- Windows 2000 Pro or Server
- Windows XP Home, Professional, or Tablet
- Windows Vista Premium, Business, or Ultimate
- Windows 2003 Standard, Enterprise, or Small Business Server

**CPU:** 1 GHz minimum

**MEMORY:** 256 MB RAM or more recommended

**DISK SPACE:** 100 MB free space

### BROWSER:

- Internet Explorer 6.0 SP1 or later
- Firefox 2.0.0.1

NOTE: The client software component for this product is not intended for scanning file servers